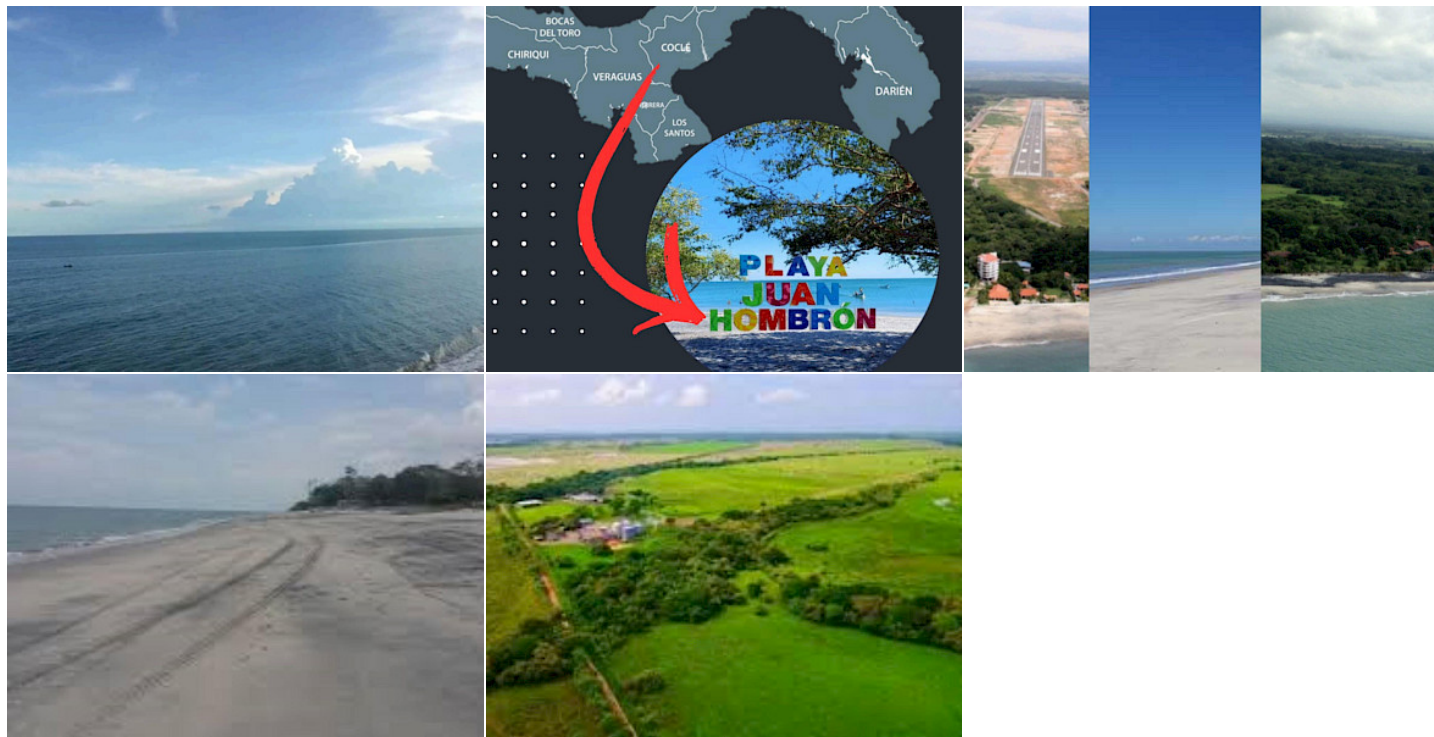


BEACHFRONT LAND FOR SALE IN JUAN HOMBRÓN COCLE

En Venta

\$5,900,000



Ubicación de la propiedad

Provincia	Locations
Distrito	Coclé
Corregimiento	Antón
Barrio	Anton
Calle	JUAN HOMBRÓN, COCLÉ, PANAMÁ

Detalles de la Propiedad

Property ID:	MLS-23393
Listing Type:	En Venta
Property Type:	Farm
Building Neighborhood:	JUAN HOMBRÓN, COCLÉ, PANAMÁ
Price:	\$5,900,000
Lot Size:	90,242 m ²



BEACHFRONT LAND FOR SALE IN JUAN HOMBRÓN COCLE

En Venta

\$5,900,000

Descripción de la propiedad

FOR SALE: BEACHFRONT LAND IN JUAN HOMBRÓN – COCLE, PANAMA A rare investment opportunity in one of Panama's most promising coastal regions. This beachfront property, located in the community of Juan Hombrón, spans a total of 90,242 m², including a titled parcel and an adjoining section under legalization—both owned by the same parties. With direct beach access, mostly flat terrain, and lush natural surroundings, this land is ideal for high-end tourism, residential, or recreational development. Strategically located just 20 minutes from Scarlett Martínez International Airport and surrounded by renowned projects like Buenaventura, Playa Blanca, and Decameron, it's the perfect site for a boutique hotel, private villas, beach club, or eco-residential complex. The property offers road access, nearby utilities, and a peaceful environment that blends nature, connectivity, and commercial potential. Official appraisal exceeds \$17.8 million, but it's offered at a promotional price of \$7,900,000, making it an unmatched opportunity in today's market. Spaces that transcend generations. This is not just land—it's vision, legacy, and possibility. WE HAVE THE PROPERTY YOU'RE LOOKING FOR. CONTACT US!

Características

Amenidades

- **Zoning:** No Asignada