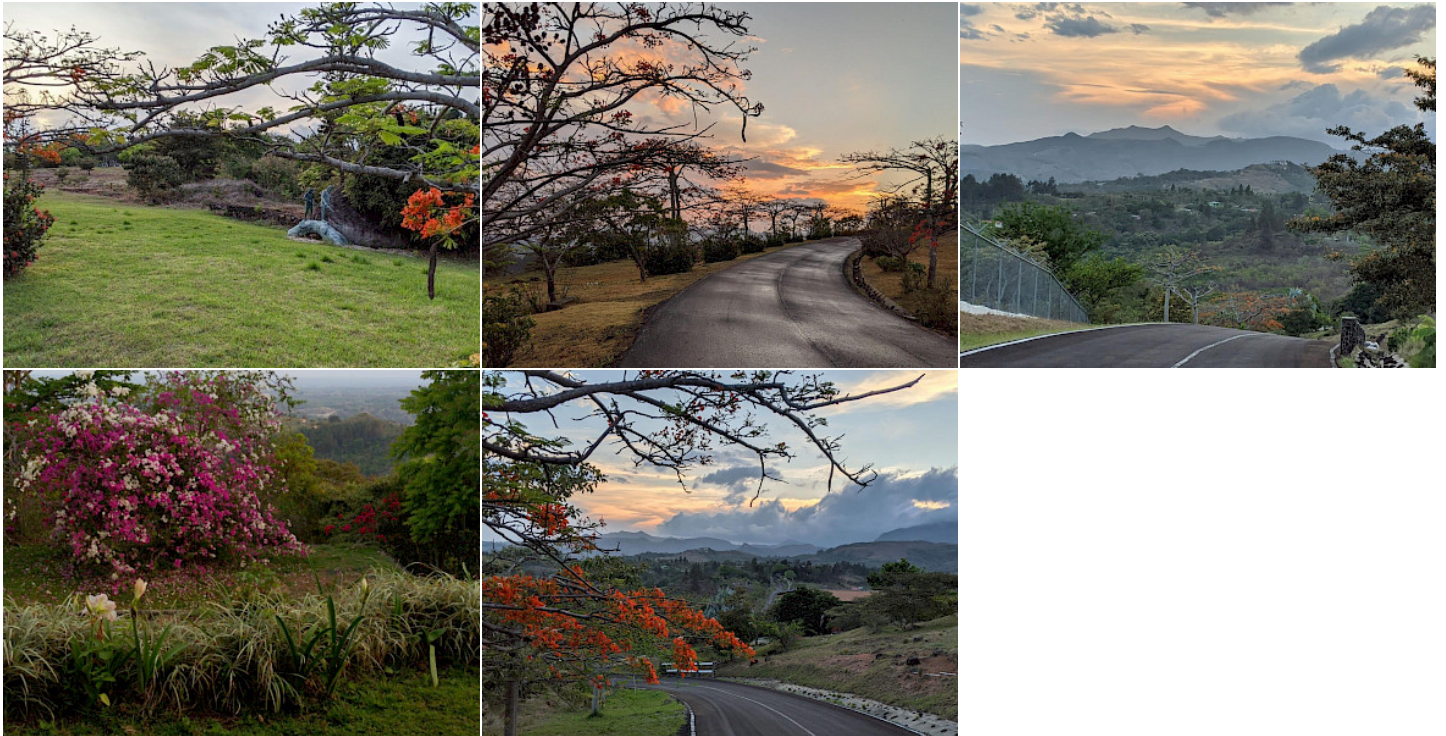


Nancito - Where Privacy Meets Community

En Venta

\$12,000,000



Ubicación de la propiedad

Provincia	Locations
Distrito	Panamá Oeste
Corregimiento	Chame
Barrio	Las Lajas
Calle	EL NANCITO, CHAME

Detalles de la Propiedad

Property ID:	MLS-23002
Listing Type:	En Venta
Property Type:	Farm
Building Neighborhood:	EL NANCITO, CHAME
Price:	\$12,000,000
Lot Size:	95,000 m ²

Nancito - Where Privacy Meets Community

En Venta

\$12,000,000

Descripción de la propiedad

This 9.5-hectare property in El Nancito, Las Lajas de San Carlos, offers privacy and natural beauty just 20 minutes from Coronado, Panama's most established beach community. At approximately 500 meters above sea level, the land enjoys cooler temperatures, lush scenery, and stunning mountain and ocean views. Coronado provides everything residents and visitors need: a thriving expat and local community, top-rated international restaurants, golf courses, sports clubs, swimmable beaches, surfing, kitesurfing, fishing, and horseback riding. Essential services like supermarkets, international schools, private clinics, hospitals, banks, insurance brokers, and even a cinema are all nearby. Panama City is just an hour's drive away. The property itself features manicured green areas, mature trees, and a peaceful atmosphere. It's ideal for those seeking tranquility and privacy without sacrificing modern conveniences and social life. For developers, the land presents excellent potential for a boutique gated community or private estate project. Envision upscale mountain homes, walking trails, wellness areas, and shared spaces that foster connection without sacrificing privacy. Whether for personal use or investment, El Nancito is a unique opportunity to create a balanced lifestyle in Panama's cool highlands, close to world-class amenities.

Características

Jardín

Terraza

Rancho-Gazebo

Patio

Amenidades

- **Access:** Concreto
- **Zoning:** No Asignada